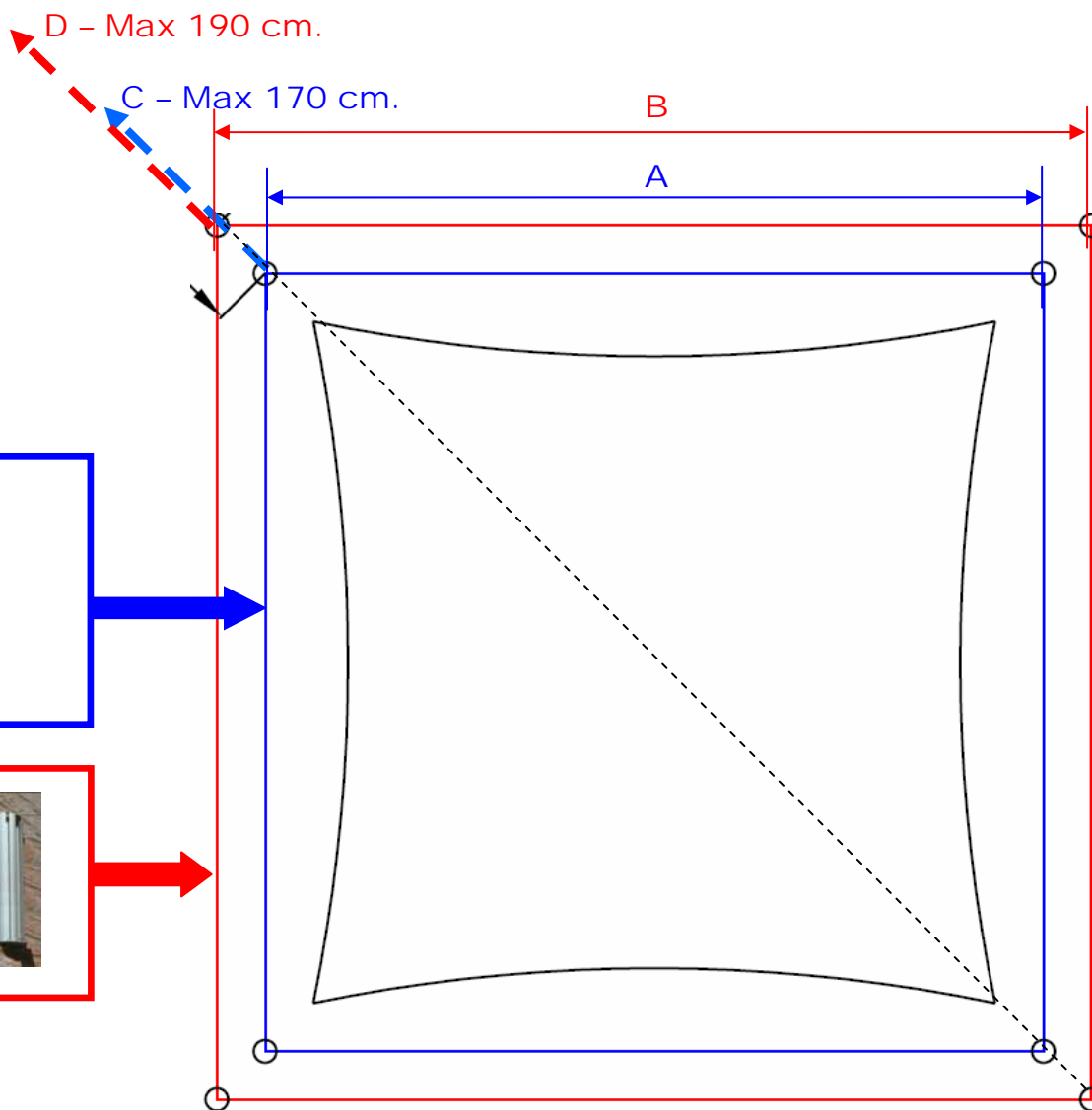
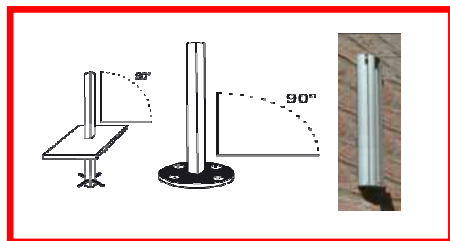
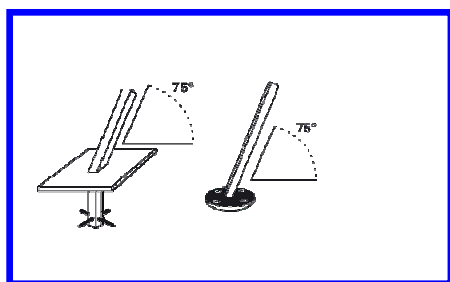
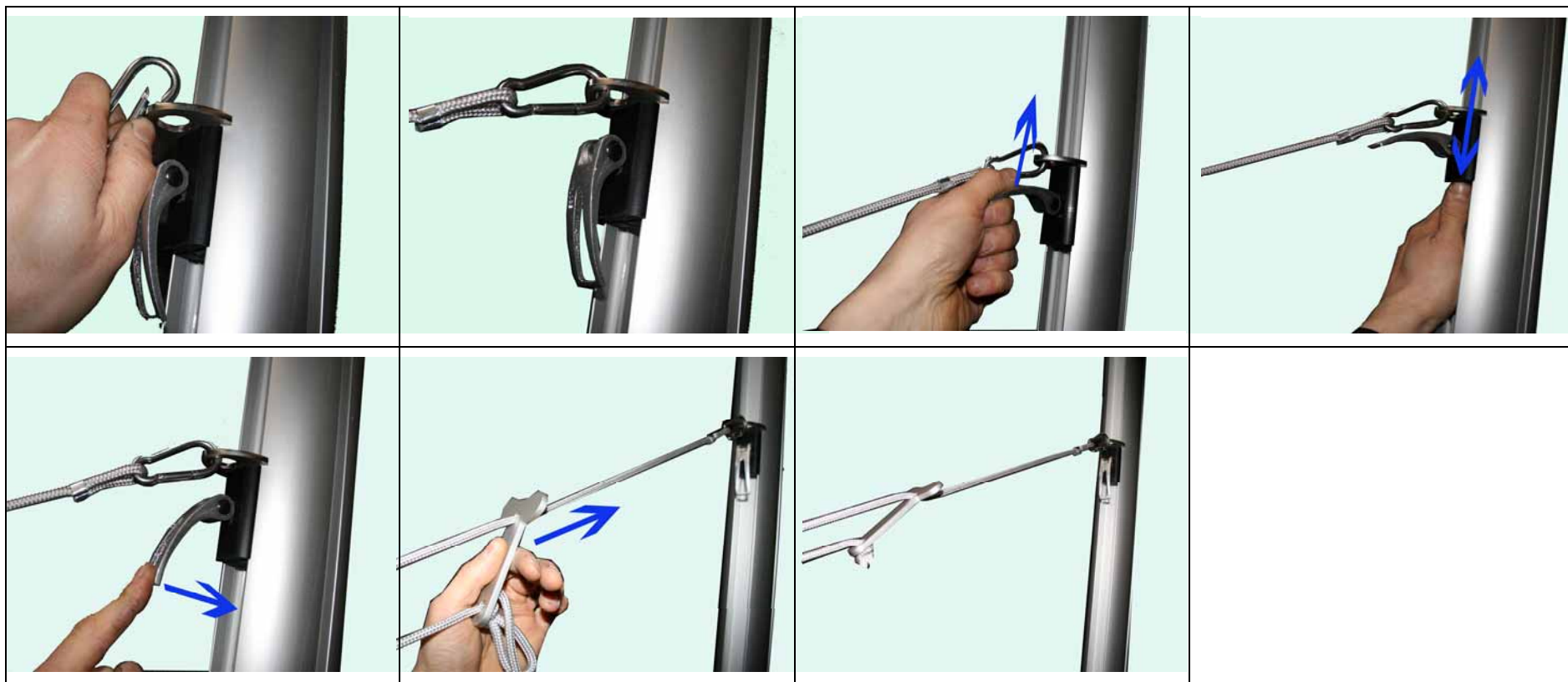


	S 3 X 3 m	S 4 X 4 m
--	-----------	-----------

A	342 cm	442 cm
B	385 cm	485 cm

C	Max. 170 cm	Max. 170 cm
D	Max. 190 cm	Max. 190 cm





NL Verwijder het zeil bij te sterke of onaangename wind.
FR Fermer la voile en cas de grand vent désagréable.
GB Remove canvas when wind blows unpleasantly hard.
DE Je nach Windstärke bitte das Segel einholen.
ES Obtener la lona cuando el viento sople de manera desagradable y con fuerza.
IT Quando il vento soffia in maniera incessante e violenta, rimouvere la vela.